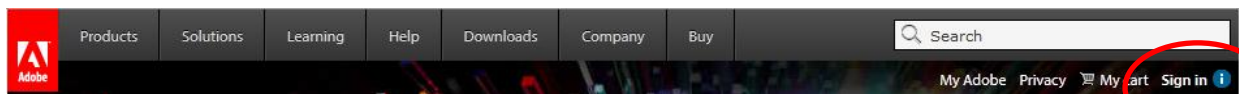


## Ebooks for Linux Users: Adobe Digital Editions

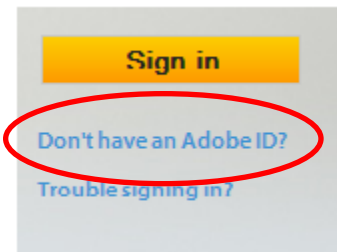
**About this guide:** *Instructions are based on Ubuntu 12.04 and a Nook Simple Touch — depending on your distro and your device, your mileage may vary.*

### Get an Adobe ID



Go to **Adobe.com**. Click on “Sign In.” On the next page, click on “Don’t have an Adobe ID?”

Fill out the form and **make note of the email address that you use — which is your Adobe ID — and your password.** You will need them to authorize the Overdrive app.



### Downloading Wine



Running Adobe Digital Editions(ADE) on Linux requires **Wine**, a program that allows you to run Windows programs. You can get a Linux-compatible version of ADE through Wine. You can find download instructions for your Linux distro at:

**[www.winehq.org/download](http://www.winehq.org/download)**

**Important note:** Do not download Adobe Digital Editions 2.0, the newest version: it is not compatible with Linux.

On Ubuntu, you can install Wine via the Ubuntu Software Center, or open Terminal and enter the following to add the wine repository:



```
sudo add-apt-repository ppa:ubuntu-wine/ppa
```

Then update APT info by entering:

```
sudo apt-get update
```

Finally to install, enter

```
sudo apt-get install wine1.5
```

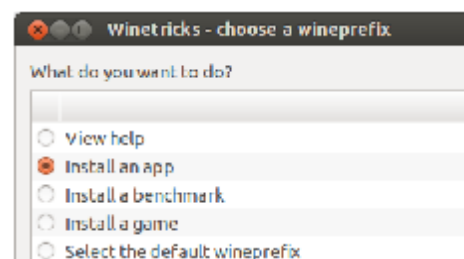


### Installing ADE

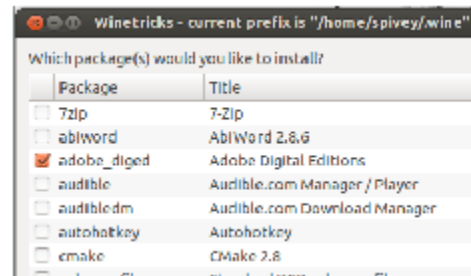
Once you have installed Wine, click on the Dash icon and enter “Wine” in the search box. Click on “**Winetricks**” which is a Wine utility for downloading libraries required for some programs to run on Wine.



Choose “install an app” ...



Then select "adobe\_diged".



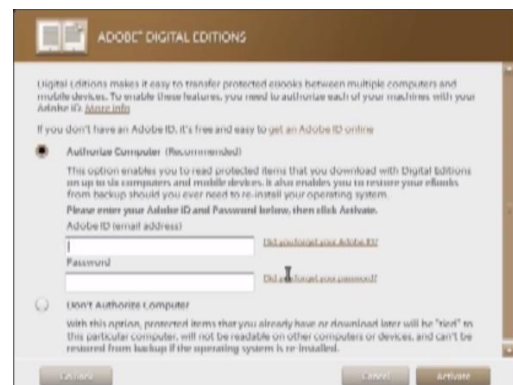
Go through the installer accepting all default settings.



This icon will appear on your desktop.



A dialog authorizing your computer will pop up and you will be asked to add your Adobe ID and password. Enter them and click "Activate."

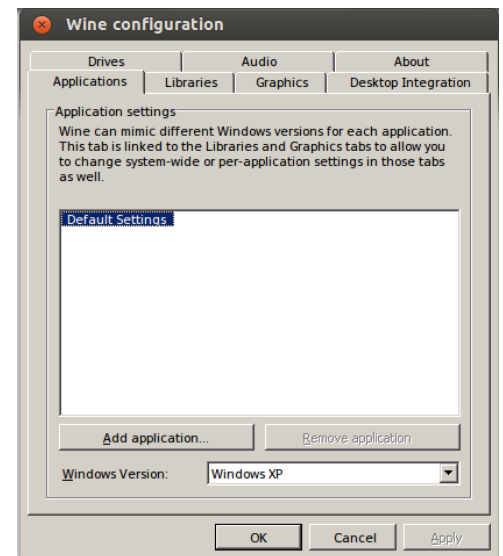


### Attaching your Nook

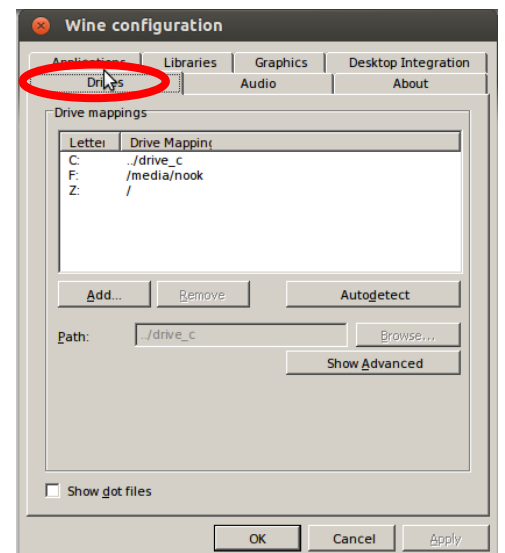
**Important Note:** Some ereaders require drivers to be installed, which may not work with Wine and may need to be installed by other means. The following instructions are for a Nook Simple Touch.



With your Nook connected to the computer, open up the Dash again and this time choose “Configure Wine”.

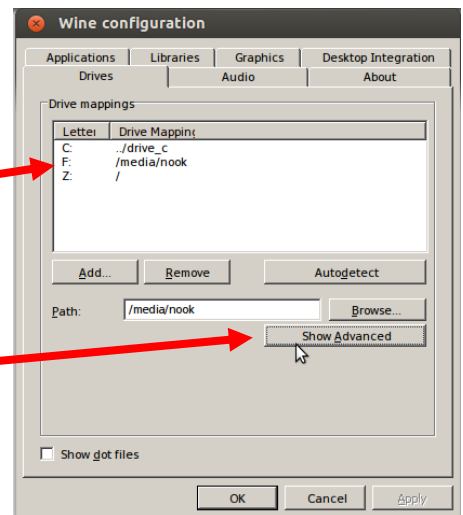


Step 1. Click the “Drives” tab.



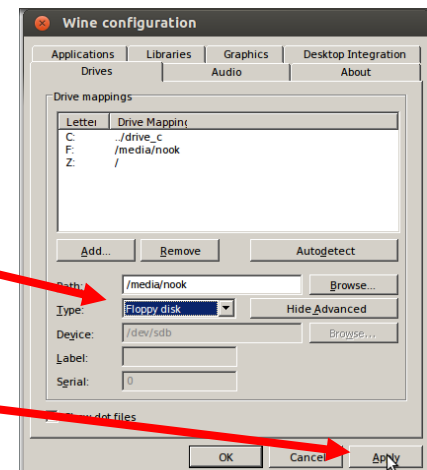
Step 2. Select the drive letter next to the path that shows “media/nook”.

Step 3. Click on “show advanced”.



Step 4. Set “Type” to “Floppy Disk.”

Step 5. Click “Apply” and LEAVE THE WINDOW OPEN. Clicking “OK” will not save the settings.



Open Adobe Digital Editions and the Nook will appear on the left. There will be a prompt to authorize the device with ADE.

To search for ebooks, go to :

<http://overdrive.westlakelibrary.org>

You can access ebooks in all formats except Kindle.

When downloading an ebook, choose ‘Open with Adobe Digital Editions’. ADE will open and the book will download on the right. Drag the book with your mouse onto your Nook and it will transfer. You can also read ebooks in ADE, itself.

*For more help with ebooks and  
audiobooks:*

***<http://bit.ly/EBOOKSHELP>***

*For more help with ebooks and  
audiobooks:*

***<http://bit.ly/EBOOKSHELP>***